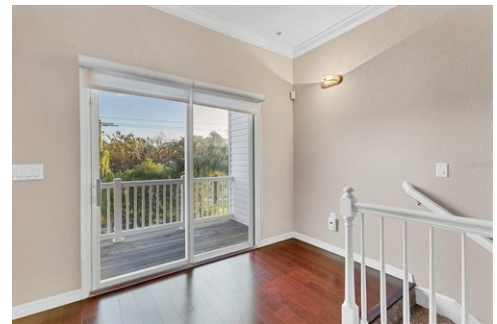




\$ 375,000



3309 10th Ln W, Palmetto, FL 34221

- » Beds: 4 | Baths: 3 Full, 1 Half
- » MLS #: A4629012
- » Townhouse | 2,604 ft² | Lot: 2,261 ft²
- » More Info: 330910thLnW.IsForSale.com



Cathy Palmer

941.920.2247

cathypalmer@michaelsaunders.com

<http://CathyPalmer.michaelsaunders.com>

Sales Office

4400 Manatee Avenue West

Bradenton, FL 34209

(941) 951-6660

Remarks

One or more photo(s) has been virtually staged. Discover easy, elegant living in this thoughtfully designed three-level, 4 bedroom, 3 ½ bath townhouse near scenic Sned Island. This move-in-ready home offers a versatile floor plan, with each floor accessible by a PRIVATE ELEVATOR, ensuring that multi-level living is convenient for everyone. The main level, perfect for gatherings, features an open living and dining space that flows into a spacious kitchen with newer appliances, ample cabinetry, a pantry, and a cozy breakfast area. Each level has its own screened outdoor area, ideal for relaxing and enjoying the warm Florida breeze. On the upper floor, the primary suite provides a peaceful retreat with a private balcony, dual walk-in closets, and an ensuite bath complete with a step-in shower, garden tub, and dual vanities. This level also houses two additional bedrooms, a shared bath, and a conveniently located laundry area. The lower level offers a large bedroom with an ensuite bath, which could serve as a second primary suite, a bonus room, or guest space, making it perfect for multi-generational living. A rear lanai entrance and outdoor storage add convenience and flexibility to this level. The naver driveway leads to a two-car garage, providing both functionality and curb

